

rockyshow.com.au



# POULTRY & WATERFOWL

2025 COMPETITION SCHEDULE

THE  
*Rocky*  
SHOW

**FUN** THE OLD FASHIONED WAY

# POULTRY & WATERFOWL SCHEDULE

**\*\* Updated 03/02/2025: Schedule could be amended without notice \*\***

## POULTRY & WATERFOWL COMMITTEE

Mel Slade  
0418 620 180

### ENTRIES CLOSE

11.59pm Friday 23 May 2025

### ENTRY FEES

General: \$2 per entry

Novice Judge: \$1 per entry

**There will be a \$1 administration fee.**

### EXHIBIT DELIVERY

Rockhampton Showgrounds  
Kele Pavilion

12pm – 6pm Wednesday 11 June 2025

6am – 8am Thursday 12 June 2025

### EXHIBIT COLLECTION

Rockhampton Showgrounds  
Kele Pavilion

6pm – 8pm Friday 13 June 2025

### JUDGING

Thursday 12 June 2025

### **Rockhampton Agricultural Show Contact Information**

Administration Office Opening Hours: 8.30am - 4pm Monday to  
Friday from 26 May to 6 June 2025

Name: Rockhampton Agricultural Show, Rockhampton Regional  
Council presented by Advance Rockhampton

Phone: (07) 4936 8800

Email: [show@rrc.qld.gov.au](mailto:show@rrc.qld.gov.au)

Postal Address: PO Box 1860, ROCKHAMPTON QLD 4700

[www.rockyshow.com.au](http://www.rockyshow.com.au)

[www.facebook.com/RockyAgShow/](https://www.facebook.com/RockyAgShow/)

## **IMPORTANT**

Please note there may be some changes to classes, regulations and procedures from previous years. To ensure that there are no issues with your entries, please read this schedule carefully.

## **PRIVACY NOTICE**

Rockhampton Regional Council (RRC) is collecting the personal information you supply for the purpose of Rockhampton Agricultural Show communications. RRC deals with personal information in accordance with law, including the *Information Privacy Act 2009*. Some of this information may be given to customers, sponsors and event partners and listed on Council's website for the purpose of advertising.

## **REGISTRATIONS**

### **Step 1: Register your entry/s online**

As a nominee, please ensure you have read through the key information and documents listed on the website before registering into a competition.

Once you are ready to submit an entry, follow the links to Showday Online to register. Fill out your entries as per Showday Online instructions and pay for your entries. Head to [www.rockyshow.com.au/Competitions](http://www.rockyshow.com.au/Competitions) for more information and to enter.

If you cannot pay online, CASH payments can be made at the Rockhampton Regional Council City Hall Customer Service office (232 Bolsover St, Rockhampton City QLD 4700) 9am - 4pm Monday to Friday until 23 May 2025 or at the Rockhampton Showgrounds Administration Office 8.30am - 4pm Monday to Friday from 26 May to 6 June 2025.

Rockhampton Agricultural Show may cancel or postpone the competitions at their discretion. In the event of a cancellation or postponement, where the exhibitor/competitor is unable to complete their nominated competition please note that no refunds will be provided. This includes circumstances where the exhibitor/competitor withdraws from the competition, fails to attend, or is otherwise unable to participate.

By submitting your entry, you acknowledge and accept that the Rockhampton Agricultural Show does not offer any refunds for nomination fees, or any associated costs, regardless of the reason for non-participation, postponement or cancellation of the competition.

### **Step 2: Get your exhibit/s ready**

Please follow the guidelines in this schedule to ensure your item/s are ready.

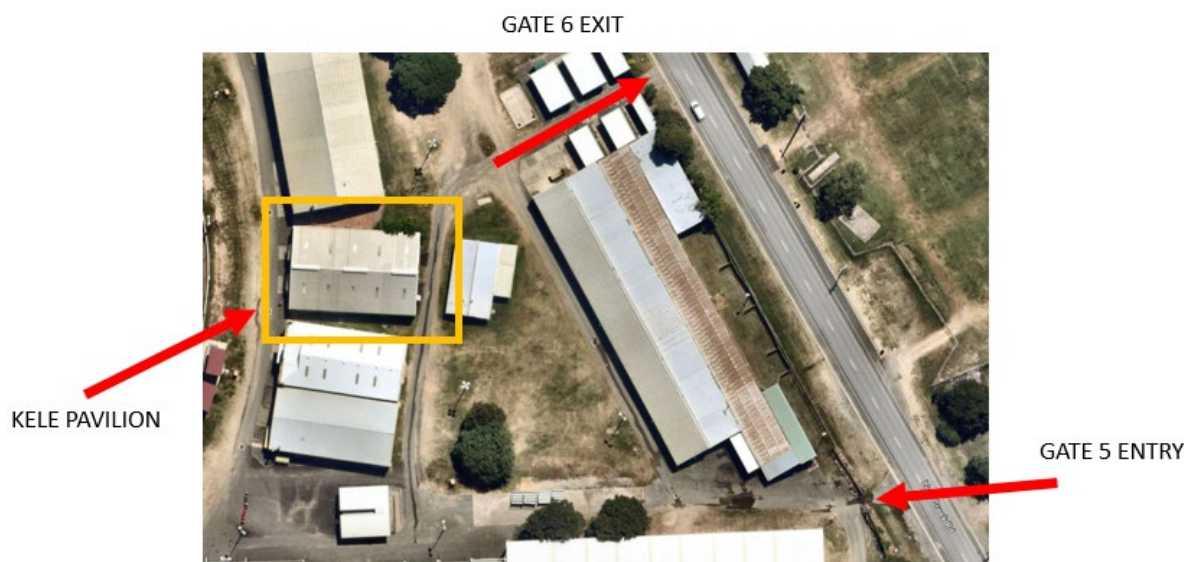
### Step 3: Deliver your item/s

Please deliver your entries to the Rockhampton Showgrounds Kele Pavilion, 12pm - 6pm Wednesday 11 June 2025 or 6am – 8am Thursday 12 June 2025.

**Entry:** Drive into the Showgrounds through Gate 5 and park behind Kele Pavilion to drop off.

**Exit:** via Gate 6.

Alternatively, park on Graeme Acton Way and walk your exhibit in.



### Step 4: Collect your item/s

Please collect your items from the Rockhampton Showgrounds Kele Pavilion, 6pm – 8pm Friday 13 June 2025.

Park on Graeme Acton Way and walk in through Gate 5 to the Kele Pavilion.

Please ensure you have your exhibitor card ready to show the security staff on Gate 5 to gain entry.

**\*Strictly no vehicle access within the Showgrounds during exhibit collection.**

## **VOLUNTEERS**

The countdown to the Rockhampton Agricultural Show has begun, and Rockhampton Regional Council is once again calling on the community for their invaluable support as volunteers for the Poultry and Waterfowl Competition.

Volunteering at the Show isn't just about lending a hand; it's about becoming part of a passionate team, making new friends, and creating lasting memories. Whether you're a seasoned volunteer or new to the experience, there's a role for everyone in our dedicated crew.

Look forward to an impressive display in the Kele Pavilion of various poultry and waterfowl breeds, each showcasing their unique colours, sizes, and characteristics. Attendees will have the opportunity to interact with breeders, learn about different breeds, and vote for their favourite in the People's Choice Competition.

As a volunteer, you may be asked to assist with the following tasks:

### **Competition Setup**

Help the Poultry and Waterfowl Committee with pavilion setup, accepting and organising entries as they arrive.

### **Assistant Stewarding**

Gain a behind-the-scenes look at the judging process by assisting judges in organising and scoring the entries.

### **On the Day**

Join the committees in the pavilion to engage with like-minded people, discuss the competitions, and share experiences. Be the go-to contact for any questions or queries from the public.

Your support will help make this year's Caged Birds Competition a memorable success. We look forward to welcoming you to the team!

As a token of our appreciation for your support, volunteers will enjoy a host of perks, including:

- **FREE Access:** Explore all the excitement of the Show using your exclusive Volunteer pass!
- **FREE Show Volunteer Shirt:** Receive a Show Volunteer shirt to wear with pride and keep as a memento of your contribution.
- **Short Shifts:** Flexible volunteering with short shifts to suit your schedule, allowing you to enjoy the Show while helping out.
- **Resume Boost:** Gain valuable volunteer experience to enhance your resume and Showcase your dedication to the community.
- **Training and Networking:** Take advantage of training opportunities and network with fellow volunteers, expanding your skills and connections.

For more information on becoming a volunteer at the Rockhampton Agricultural Show please visit [www.rockyShow.com.au/Volunteer](http://www.rockyShow.com.au/Volunteer)



## **PROUDLY SUPPORTED BY**

The Rockhampton Agricultural Show proudly celebrates the Poultry and Waterfowl Competitions, showcasing the care and dedication of breeders and enthusiasts. This beloved competition is a highlight for animal lovers and agricultural enthusiasts alike.

A heartfelt thank you to our generous supporters:

Your contributions towards prize money, awards, and event operations make this competition possible and help us honor the efforts of our participants.

If you'd like to join this fantastic group of supporters and contribute to the Poultry and Waterfowl Competitions, we'd love to hear from you!

Contact us at [show@rrc.qld.gov.au](mailto:show@rrc.qld.gov.au) to find out how you can get involved.

## REGULATIONS

**Please review carefully, as there may have been updates since the 2024 schedule.**

1. Entry fees **MUST** be paid with the entry and lodged with the Rockhampton Agricultural Show by the allocated time.
2. Exhibits must have enough food and water when they arrive, for the first day. Competition Stewards will attend to the feeding and watering for the duration of Show.
3. Exhibits will not be accepted without water and/or water bowl.
4. Alternative collection times for birds must be arranged with Competition Stewards.
5. The Rockhampton Agricultural Show reserve the right to refuse any entry without giving their reasons for doing so.
6. Any exhibit suffering from any infectious or contagious disease shall be reported immediately to the Competition Steward who shall order its removal. The Competition Steward must notify the Chief Biosecurity Officer if they have ordered the removal of an exhibit.
7. No decoration or award cards, except such as provided by/approved by the Committee shall be placed on any exhibit or affixed thereto.
8. Exhibits entered in the wrong class by the exhibitor may be transferred to the proper class by Competition Stewards.
9. The Rockhampton Agricultural Show reserves the right to cancel or change any event or class or substitute a judge where or when deemed necessary.
10. All entries must be the bona fide property of the exhibitor on the date of entry. Entries are accepted entirely at owner's risk. Borrowing birds for show purposes or sales for limited periods will render both parties liable for disqualification.
11. For the duration of the show, all exhibits will be in the custody of the Competition Steward and shall not be touched or handled by the owner or any other person. Any exhibitor seen to be breaching this clause may forfeit their nomination and any prize money awarded.
12. All prize money will be paid via cash payment at the Kele Pavilion during the exhibit collection 6pm Friday 13 June 2025.
  - From Thursday 19 June 2025 prize money will be available for collection from Rockhampton Regional Council City Hall Customer Service office (232 Bolsover St, Rockhampton City QLD 4700) 9am – 4pm Monday to Friday until 30 June 2025.
  - **Any prize money not collected** by 30 June 2025 will be forfeited and allocated to the next year's Show.
  - Prize money will **not** be handed out without the place card being presented to the Competition Steward or Rockhampton Regional Council staff.
13. All matters in dispute shall be subject to the decision of the Poultry and Waterfowl Competition Committee appointed for such purposes.
14. No protest will be considered unless lodged with the Competition Committee, in writing within one hour of completion of the event, enclosing \$50 which will be forfeited to the Rockhampton Agricultural Show should the protest be considered frivolous. Protests will only be received from competitors in the class in dispute.
15. Any person, whether competitor or not, who in the opinion of the Competition Committee behaves in any offensive or threatening manner, either inside or outside, to any official or judge or member of the public, shall be liable to disqualification from further competition and shall be liable to be removed from the grounds.
16. Any exhibitor or his agent who shall make a false report and give misleading information or suppress necessary information respecting any exhibit shall be held to

have forfeited any prize gained by these means. The exhibit and the exhibitor together with the agent may be disqualified and the matter referred to the Queensland Chamber of Agricultural Societies.

## **BIOSECURITY**

17. Exhibitors must complete an animal health declaration on the health status of the animal on entry to the showgrounds.
18. All poultry and caged birds bought onsite must comply with the requirements of the 2025 Rockhampton Show Biosecurity Plan.
19. If the Chief Biosecurity Officer requests documents, information or directs a person to undertake an action, these requests must be complied with.
20. All birds are to be free of lice and disease. Any affected birds must be moved to a quarantine area or collected by owner immediately.
21. If an animal becomes ill it may be moved to the designated quarantine area, at the discretion of the Chief Biosecurity Officer or the on-call Event Veterinarian.
22. If the on-call Event Veterinarian is required, the owner of the animal is responsible for payments to the Veterinarian.

## **SPECIAL POULTRY AND CAGED BIRDS REGULATIONS**

For the conduct of Poultry and Caged Birds competitions at QCAS affiliated Queensland Agricultural Shows where there is a conflict between these regulations and the regulations and rules of the Rockhampton Agricultural Show, the rules of the affiliated Agricultural Society prevail.

These regulations are to be read in conjunction with the General Regulations contained in this schedule.

23. Birds can only be removed from showing area with the permission of the Competition Steward.
24. Any Bird entered in the incorrect class can, at the discretion of the Competition Steward, be re-entered in the correct class.
25. No birds to be removed or handled without the Competition Steward's permission.
26. Any bird found to have been tampered with may, at the discretion of the Competition Stewards, be disqualified.
27. Eggs remain the property of the affiliated Agricultural Society.
28. No trimming, plucking or dyeing of feathers, staining of legs or any fraudulent practice will be allowed.
29. Every exhibitor will be deemed responsible for the condition in which his/her exhibit appears in the pen. It shall be permissible for exhibitors to dub male game fowl and game bantams.
30. Birds must be true to breed, no cross breeds.
31. Banded birds are eligible for judging.
32. Junior exhibitors must pen and unpen their own entries.

## **AGE OF EXHIBITS**

33. Birds 12 months and over will be judged as adults.

## **JUDGING**

34. Judging standards will be those recognised by the Australian Standard or the British Poultry Standard where applicable.
35. Exhibitors are not to talk to Judges during judging.
36. Judges are not to judge classes in which they have entered.
37. An exhibitor shall not compete nor show any bird in a class if the bird has been owned or leased by the Judge or a member of the Judge's immediate family or if the Judge is



- the exhibitor's employer or business partner within three (3) months prior to or during the holding of the Show.
38. An exhibitor shall not compete if the exhibitor or any bird being shown by the exhibitor has been given tuition by the Judge or the Judge's business partner within three (3) months prior to or during the show.
  39. An exhibitor is ineligible to compete, if the exhibitor has employed or has been employed by or has been a business partner of the Judge of the Competition within three (3) months prior to or during the holding of the Show.
  40. A Judge shall not visit the bird-housing complex of the Rockhampton Agricultural Show, nor the owners, nor inspector discuss any animal entered in the Show prior to or during the judging of the relevant class.

## DEFINITIONS

To assist in interpretation, the following definitions apply:

AC	Any Colour
AV	Any Variety
AOV	Any Other Variety
AOC	Any Other Colour

## **SOFT FEATHER LARGE FOWL**

**Entry Fees: \$2 per entry**

### **Australorps, Black**

Class 6501 Cock  
Class 6503 Hen

Class 6502 Cockerel  
Class 6504 Pullet

### **Australorps, AC**

Class 6505 Cock  
Class 6507 Hen

Class 6506 Cockerel  
Class 6508 Pullet

### **Plymouth Rocks**

Class 6509 Cock  
Class 6511 Hen

Class 6510 Cockerel  
Class 6512 Pullet

### **Wyandotte AC**

Class 6513 Cock  
Class 6515 Hen

Class 6514 Cockerel  
Class 6516 Pullet

### **Sussex, AC**

Class 6517 Cock  
Class 6519 Hen

Class 6518 Cockerel  
Class 6520 Pullet

### **Langshan, Black**

Class 6521 Cock  
Class 6523 Hen

Class 6522 Cockerel  
Class 6524 Pullet

### **Silkies, AC**

Class 6525 Cock  
Class 6527 Hen

Class 6526 Cockerel  
Class 6528 Pullet

### **Silkies, White**

Class 6529 Cock  
Class 6531 Hen

Class 6530 Cockerel  
Class 6532 Pullet

### **Araucana, AC**

Class 6533 Cock  
Class 6535 Hen

Class 6534 Cockerel  
Class 6536 Pullet

### **Cochin, AC**

Class 6537 Cock  
Class 6539 Hen

Class 6538 Cockerel  
Class 6540 Pullet

### **Brahma, AC**

Class 6541 Cock  
Class 6543 Hen

Class 6542 Cockerel  
Class 6544 Pullet

### **Any Other Variety Soft Feather**

Class 6545 Cock  
Class 6547 Hen

Class 6546 Cockerel  
Class 6548 Pullet

## **RESERVE CHAMPION SOFT FEATHER LARGE MALE**

To be chosen from Classes 6501 - 6548

Prize Money: \$10

## **CHAMPION SOFT FEATHER LARGE MALE**

To be chosen from Classes 6501 - 6548

Prize Money: \$20

## **RESERVE CHAMPION SOFT FEATHER LARGE FEMALE**

To be chosen from Classes 6501 - 6548

Prize Money: \$10

## **CHAMPION SOFT FEATHER LARGE FEMALE**

To be chosen from Classes 6501 - 6548

Prize Money: \$20

## **HARD FEATHER LARGE FOWL GAME**

Entry Fee: \$2 per entry

### **Old English Black Red and Partridge**

Class 6549 Cock

Class 6551 Hen

Class 6550 Cockerel

Class 6552 Pullet

### **Old English Game, Duckwing, AV**

Class 6553 Cock

Class 6555 Hen

Class 6554 Cockerel

Class 6556 Pullet

### **Old English Game, Ginger, AV**

Class 6557 Cock

Class 6559 Hen

Class 6558 Cockerel

Class 6560 Pullet

### **Old English Game, AOV**

Class 6561 Cock

Class 6563 Hen

Class 6562 Cockerel

Class 6564 Pullet

### **Indian Game AC**

Class 6565 Cock

Class 6567 Hen

Class 6566 Cockerel

Class 6568 Pullet

### **Any Other Variety Game**

Class 6569 Cock

Class 6571 Hen

Class 6570 Cockerel

Class 6572 Pullet

## **RESERVE CHAMPION HARD FEATHER LARGE MALE**

To be chosen from Classes 6549 - 6572

Prize Money: \$10

## **CHAMPION HARD FEATHER LARGE MALE**

To be chosen from Classes 6549 - 6572

Prize Money: \$20

## **RESERVE CHAMPION HARD FEATHER LARGE FEMALE**

To be chosen from Classes 6549 - 6572

Prize Money: \$10

## **CHAMPION HARD FEATHER LARGE FEMALE**

To be chosen from Classes 6549 - 6572

Prize Money: \$20

Class 6573 Pen of Pairs Soft or Hard Feather Large

Prize Money: 1st \$10 and sash

## **SOFT FEATHER BANTAMS**

Entry Fee: \$2 per entry

### **Wyandottes, AC**

Class 6574 Cock

Class 6576 Hen

Class 6575 Cockerel

Class 6577 Pullet

### **Pekin, AC**

Class 6578 Cock

Class 6580 Hen

Class 6579 Cockerel

Class 6581 Pullet

### **Rhode Island Red**

Class 6582 Cock

Class 6584 Hen

Class 6583 Cockerel

Class 6585 Pullet

### **Langshan, Black**

Class 6586 Cock

Class 6588 Hen

Class 6587 Cockerel

Class 6589 Pullet

### **Langshan, AC**

Class 6590 Cock

Class 6592 Hen

Class 6591 Cockerel

Class 6593 Pullet

### **Sussex**

Class 6594 Cock

Class 6596 Hen

Class 6595 Cockerel

Class 6597 Pullet

### **Australorp, Black**

Class 6598 Cock

Class 6600 Hen

Class 6599 Cockerel

Class 6601 Pullet

### **Australorp, Blue**

Class 6602 Cock

Class 6604 Hen

Class 6603 Cockerel

Class 6605 Pullet

### **Japanese Bantam Birch**

Class 6606 Cock

Class 6608 Hen

Class 6607 Cockerel

Class 6609 Pullet

**Japanese Bantam Mottle**

Class 6610 Cock  
Class 6612 Hen

Class 6611 Cockerel  
Class 6613 Pullet

**Japanese Bantam AOC**

Class 6614 Cock  
Class 6616 Hen

Class 6615 Cockerel  
Class 6617 Pullet

**AOV Soft feather (State Variety)**

Class 6618 Cock  
Class 6620 Hen

Class 6619 Cockerel  
Class 6621 Pullet

**RESERVE CHAMPION SOFT FEATHER MALE BANTAM**

To be chosen from Classes 6574 - 6621

Prize Money: \$10

**CHAMPION SOFT FEATHER MALE BANTAM**

To be chosen from Classes 6574 - 6621

Prize Money: \$20

**RESERVE CHAMPION SOFT FEATHER FEMALE BANTAM**

To be chosen from Classes 6574 - 6621

Prize Money: \$10

**CHAMPION SOFT FEATHER FEMALE BANTAM**

To be chosen from Classes 6574 - 6621

Prize Money: \$20

**HARD FEATHER BANTAMS**

Entry Fee: \$2 per entry

**Modern Black/Red Partridge Game**

Class 6622 Cock  
Class 6624 Hen

Class 6623 Cockerel  
Class 6625 Pullet

**Modern British Pile Game**

Class 6626 Cock  
Class 6628 Hen

Class 6627 Cockerel  
Class 6629 Pullet

**Modern Game, Creel**

Class 6630 Cock  
Class 6632 Hen

Class 6631 Cockerel  
Class 6633 Pullet

**Old English Game, Black/Red-Black Tail Wheaten**

Class 6634 Cock  
Class 6636 Hen

Class 6635 Cockerel  
Class 6637 Pullet

**Old English Game, Duckwing AV**

Class 6638 Cock  
Class 6640 Hen

Class 6639 Cockerel  
Class 6641 Pullet



**Old English Game, AOC. (State Colour)**

Class 6642 Cock  
Class 6644 Hen

Class 6643 Cockerel  
Class 6645 Pullet

**Indian Game, AC**

Class 6646 Cock  
Class 6648 Hen

Class 6647 Cockerel  
Class 6649 Pullet

**Indian Game, Dark**

Class 6650 Cock  
Class 6652 Hen

Class 6651 Cockerel  
Class 6653 Pullet

**Hard Feather Bantam AOV**

Class 6654 Cock  
Class 6656 Hen

Class 6655 Cockerel  
Class 6657 Pullet

**RESERVE CHAMPION HARD FEATHER MALE BANTAM**

To be chosen from Classes 6622 - 6657

Prize Money: \$10

**CHAMPION HARD FEATHER MALE BANTAM**

To be chosen from Classes 6622 - 6657

Prize Money: \$20

**RESERVE CHAMPION HARD FEATHER FEMALE BANTAM**

To be chosen from Classes 6622 - 6657

Prize Money: \$10

**CHAMPION HARD FEATHER FEMALE BANTAM**

To be chosen from Classes 6622 - 6657

Prize Money: \$20

Class 6658 Pair Soft or Hard feather Poultry Bantam

Prize Money: 1st \$10 and sash

**JUNIOR POULTRY**

Entry Fee: \$2 per entry | Prize: 1st sash & voucher, 2nd & 3rd sash

**Class 1 Standard Fowl AV**

Class 6659 Cock  
Class 6661 Hen

Class 6660 Cockerel  
Class 6662 Pullet

**Class 2 Bantam Fowl AV**

Class 6663 Cock  
Class 6665 Hen

Class 6664 Cockerel  
Class 6666 Pullet

**Class 3 Waterfowl AV**

Class 6667 Drake

Class 6668 Duck

**GRAND CHAMPION POULTRY**

Prize Money: \$50

Class 6669 Plate of 6 eggs  
**Prize Money: 1st \$10 and sash**

Eggs can be from any bird/colour/size (size of each egg on plate must be uniform)  
All eggs on plate must be from same bird type. ie: Chicken, Duck, Quail etc.

**\*Strictly no purchased or refrigerated eggs to be used\***

## **WATERFOWL**

**Entry Fee: \$2 per entry**

### **Muscovy**

Class 6670 Old Drake  
Class 6672 Old Duck

Class 6671 Young Drake  
Class 6673 Young Duck

### **Pekin**

Class 6674 Old Drake  
Class 6676 Old Duck

Class 6675 Young Drake  
Class 6677 Young Duck

### **Any Other Variety AOV Large Breed (State Variety)**

Class 6678 Old Drake  
Class 6680 Old Duck

Class 6679 Young Drake  
Class 6681 Young Duck

### **RESERVE CHAMPION LARGE MALE WATERFOWL**

**To be chosen from Classes 6670 - 6681**

**Prize Money: \$10**

### **CHAMPION LARGE MALE WATERFOWL**

**To be chosen from Classes 6670 - 6681**

**Prize Money: \$20**

### **RESERVE CHAMPION LARGE FEMALE WATERFOWL**

**To be chosen from Classes 6670 - 6681**

**Prize Money: \$10**

### **CHAMPION LARGE FEMALE WATERFOWL**

**To be chosen from Classes 6670 - 6681**

**Prize Money: \$20**

### **Bantam Breeds - Call Duck White**

Class 6682 Call Old Drake  
Class 6684 Call Old Duck

Class 6683 Call Young Drake  
Class 6685 Call Young Duck

### **Call Duck - AOC**

Class 6686 Call Old Drake  
Class 6688 Call Old Duck

Class 6687 Call Young Drake  
Class 6689 Call Young Duck

### **Any Other Variety**

Class 6690 AOV Old Drake  
Class 6692 AOV Old Duck

Class 6691 AOV Young Drake  
Class 6693 AOV Young Duck

## **Turkey AV / AC**

Exhibitor must bring their own pen for display.

Class 6694 Gobbler

Class 6695 Hen

### **RESERVE CHAMPION BANTAM MALE WATERFOWL**

To be chosen from Classes 6682 - 6695

Prize Money: \$10

### **CHAMPION BANTAM MALE WATERFOWL**

To be chosen from Classes 6682 - 6695

Prize Money: \$20

### **RESERVE CHAMPION BANTAM FEMALE WATERFOWL**

To be chosen from Classes 6682 - 6695

Prize Money: \$10

### **CHAMPION BANTAM FEMALE WATERFOWL**

To be chosen from Classes 6682 - 6695

Prize Money: \$20

### **GRAND CHAMPION WATERFOWL**

To be chosen from Classes 6670 - 6695

Prize Money: \$50

### **RESERVE SUPREME CHAMPION FOWL OF THE SHOW**

Prize Money: \$50

### **SUPREME CHAMPION FOWL OF THE SHOW**

Prize Money: \$100

Reserve and Supreme Champion Fowl of the Show to be judged from:

Grand Champion Poultry

Grand Champion Waterfowl

### **MOST SUCCESSFUL EXHIBITOR OF THE SHOW**

Trophy donated by Phil Peel Jewellers

All Classes will accrue points

3 for first

2 for second

1 for third

Points will be added together across all classes of Poultry and Waterfowl Competitions to gain an aggregate number for the winner to be decided.

### **PEOPLE'S CHOICE AWARD NOMINATION**

Nominations to be made at the Kele Pavilion from Thursday 12 June – Friday 13 June 2025.

Winner to be drawn 3pm Friday 13 June 2025.

**Ribbon and Donated Prize**

## **NOVICE JUDGES**

**Entry Fee: \$1 per entry | Prize: voucher and sash**

Class 6696 Novice Judges

### **REGULATIONS**

- Entries are open to people interested in judging exhibition poultry and have not adjudicated at any more than three (3) shows.
- Entrants are to present to the Competition Steward in the Poultry Pavilion at 11am Thursday 12 June 2025.
- Entrants are required to judge four Poultry classes.
- The highest score novice judge must be between 15 years to 25 years as of 1st May 2025.
- To be eligible to compete in the Meat Sheep & Poultry State Finals, competitors must comply with ALL rules noted below. Competition Steward is to ensure relevant rules are consistently enforced for competitions under their control.

### **AGE OF COMPETITORS**

1. Competitors must be aged between 15 years of age and under 25 years as at 1 May in the year of the State Finals.
  - i. Competitors under the age of 18 years must have the approval of a parent or guardian to compete and the appropriate waiver signed on the nomination form.
  - ii. Different age classes may be added to programs at local show level. These classes will not be recognised at State Finals.

### **ELIGIBILITY TO COMPETE**

2. Competitors must meet one of the following criteria –
  - i. A Queensland resident for a minimum of three (3) months prior to competing;
  - ii. Attend a Queensland educational institution;
  - iii. Residing interstate but can prove a connection with a Queensland Agricultural Society and satisfy one of the following criteria:
    - a. Permanent address has a Queensland postcode;
    - b. Competitor or parents are active in assisting either the Rockhampton Agricultural Show or the Poultry and Waterfowl Committee.
    - c. To be eligible to compete at State Finals, competitors must have won in a similar class at a local agricultural show competition.
3. Previous National winners are ineligible to compete at State level of competition.

### **ENTRY FORMS**

4. Entry Forms are available from the Queensland Agricultural Shows Website [www.queenslandshows.com.au](http://www.queenslandshows.com.au)
5. Local Agricultural Show Competition Stewards are to:
  - i. Ensure entry forms are completed for all competitors and waivers are duly signed by eligible persons;
  - ii. Forward WINNER and RUNNER UP entry forms to the Queensland Agricultural Shows Office [competitions@queenslandshows.com.au](mailto:competitions@queenslandshows.com.au) within 7 days of the competition conclusion.
6. National Competition (Procedures & Guidelines)
7. Rules are set by Agricultural Shows Australia (ASA) for National Finals. The Agricultural Shows Australia Rules (Handbooks) can be found on their website [www.agshowsaustralia.org.au/member-resources/national-competitions-guidelines/](http://www.agshowsaustralia.org.au/member-resources/national-competitions-guidelines/)