

rockyshow.com.au

Rockhampton  
Regional Council

# PHOTOGRAPHY

2025 COMPETITION SCHEDULE

THE  
**Rocky  
Show**

**FUN** THE OLD FASHIONED WAY

# PHOTOGRAPHY SCHEDULE

**\*\*Updated 11/02/2025: Schedule could be amended without notice\*\***

## PHOTOGRAPHY COMMITTEE

Rockhampton Photography Club Rocky Show Committee

[info@rockyphotoclub.org.au](mailto:info@rockyphotoclub.org.au)

### ENTRIES CLOSE

11.59pm Monday 26 May 2025

### ENTRY FEES

Open and Public: \$2 per entry

School: \$1 per entry

**There will be a \$1 administration fee.**

### EXHIBIT DELIVERY

Rockhampton Showgrounds

Administration office

8.30am – 4pm Monday 26 May to Friday 30 May 2025

### EXHIBIT COLLECTION

Rockhampton Showgrounds

McCamley Pavilion

8am – 10am Saturday 14 June 2025

### JUDGING

Public, High School & Primary: Thursday 5 June

Open and Champions: Friday 6 June

7pm Rockhampton Photography Club (1st floor of the Walter Reid Cultural Centre)

Entrants are welcome to attend.

### Rockhampton Agricultural Show Contact Information

Administration Office Opening Hours: 8.30am - 4pm Monday to Friday from 26 May to 6 June 2025

Name: Rockhampton Agricultural Show, Rockhampton Regional Council presented by Advance Rockhampton

Phone: (07) 4936 8800

Email: [show@rrc.qld.gov.au](mailto:show@rrc.qld.gov.au)

Postal Address: PO Box 1860, ROCKHAMPTON QLD 4700

[www.rockyshow.com.au](http://www.rockyshow.com.au)

[www.facebook.com/RockyAgShow/](https://www.facebook.com/RockyAgShow/)

## **IMPORTANT**

Please note there may be some changes to classes, regulations and procedures from previous years. To ensure that there are no issues with your entries, please read this schedule carefully.

## **PRIVACY NOTICE**

Rockhampton Regional Council (RRC) is collecting the personal information you supply for the purpose of Rockhampton Agricultural Show communications. RRC deals with personal information in accordance with law, including the *Information Privacy Act 2009*. Some of this information may be given to customers, sponsors and event partners and listed on Council's website for the purpose of advertising.

## **REGISTRATIONS**

### **Step 1: Register your entry/s online**

As a nominee, please ensure you have read through the key information and documents listed on the website before registering into a competition.

Once you are ready to submit an entry, follow the links to Showday Online to register. Fill out your entries as per Showday Online instructions and pay for your entries. Head to [www.rockyshow.com.au/Competitions](http://www.rockyshow.com.au/Competitions) for more information and to enter.

If you cannot pay online, CASH payments can be made at the Rockhampton Regional Council City Hall Customer Service office (232 Bolsover St, Rockhampton City QLD 4700) 9am - 4pm Monday to Friday until 23 May 2025 or at the Rockhampton Showgrounds Administration Office 8:30am - 4pm Monday to Friday from 26 May to 6 June 2025.

Rockhampton Agricultural Show may cancel or postpone the competitions at their discretion. In the event of a cancellation or postponement, where the exhibitor/competitor is unable to complete their nominated competition please note that no refunds will be provided. This includes circumstances where the exhibitor/competitor withdraws from the competition, fails to attend, or is otherwise unable to participate.

By submitting your entry, you acknowledge and accept that the Rockhampton Agricultural Show does not offer any refunds for nomination fees, or any associated costs, regardless of the reason for non-participation, postponement or cancellation of the competition.

### **Step 2: Get your exhibit/s ready**

Please follow the guidelines in this schedule to ensure your item/s are ready.

Complete the exhibitor cards on page 11 and adhere these to the back of each print right way up. Any unmarked prints will be disqualified.

1. Attach the exhibitor card to your exhibit.
2. Bring a copy of the exhibitor card that is emailed through Showday Online which will include your name. It is at the discretion of the Competition Steward if the item is returned without ID or the exhibitor card.

<b>Name:</b>
<b>Title of entry piece:</b>
<b>Class Number:</b>
<b>Phone Number:</b>



### Step 3: Deliver your item/s

Please deliver your items to the Rockhampton Showgrounds Administration Office, 8.30am – 4pm Monday 26 May to Friday 30 May 2025.

Park on either Exhibition or New Exhibition Road and walk into the Showgrounds to the Administration Office via Gate 1.

**All exhibits must be delivered to the Showgrounds on the specified delivery date/s.  
No exhibits delivered outside the specified date/s will be accepted.**

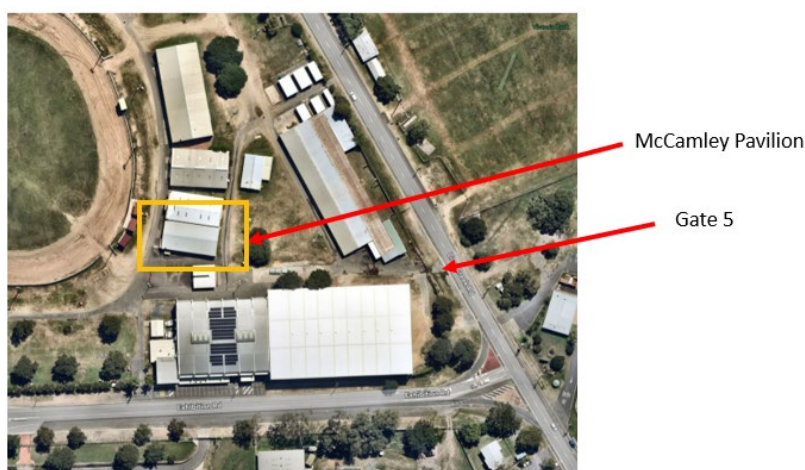


Rockhampton Showgrounds  
Administration Office

### Step 4: Collect your item/s

Please collect your items from the Rockhampton Showgrounds McCamley Pavilion, 8am – 10am Saturday 14 June 2025.

Park on Graeme Acton Way and walk into the Showgrounds via Gate 5 to the McCamley Pavilion.



**\*Strictly no vehicle access within the Showgrounds during exhibit delivery or collection.**

## VOLUNTEERS

The countdown to the Rockhampton Agricultural Show has begun, and Rockhampton Regional Council is once again calling on the community for their invaluable support as volunteers for the Photography Competition.

Volunteering at the Show isn't just about lending a hand; it's about becoming part of a passionate team, making new friends, and creating lasting memories. Whether you're a seasoned volunteer or new to the experience, there's a role for everyone in our dedicated crew.

Be treated to a captivating display of photographs that highlight the diverse talents of the community. The exhibition located in the McCamley Pavilion will feature a wide range of themes and styles, showcasing everything from breathtaking scenery to engaging portraits.

As a volunteer, you may be asked to assist with the following tasks:

### **Competition Setup**

Help the Photography Committee with pavilion setup, accepting and organising entries as they arrive.

### **On the Day**

Join the committees in the pavilion to engage with like-minded people, discuss the competitions, and share experiences. Be the go-to contact for any questions or queries from the public.

Your support will help make this year's Photography Competition a memorable success. We look forward to welcoming you to the team!

As a token of our appreciation for your support, volunteers will enjoy a host of perks, including:

- **FREE Access:** Explore all the excitement of the Show using your exclusive Volunteer pass!
- **FREE Show Volunteer Shirt:** Receive a Show Volunteer shirt to wear with pride and keep as a memento of your contribution.
- **Short Shifts:** Flexible volunteering with short shifts to suit your schedule, allowing you to enjoy the Show while helping out.
- **Resume Boost:** Gain valuable volunteer experience to enhance your resume and showcase your dedication to the community.
- **Training and Networking:** Take advantage of training opportunities and network with fellow volunteers, expanding your skills and connections.

For more information on becoming a volunteer at the Rockhampton Agricultural Show please visit [www.rockyshow.com.au/Volunteer](http://www.rockyshow.com.au/Volunteer)

## ROCKHAMPTON PHOTOGRAPHY CLUB

The Rockhampton Show Photography Competition is run by volunteer members of the Rockhampton Photography Club (RPC). The Rockhampton Photography Club is where like-minded people can come together and enjoy their passion for photography within a friendly community.

Some Rockhampton Photography Club activities are:

- Monthly photo competitions with both printed and projected images, each month with a different subject.
- Beginner photography courses
- Photoshop and lightroom workshops
- Club outings and presentations for specific photography types like astrophotography, light painting, bird photography and more.

If you would like more information or would like to join, you can contact us through;

Website: <https://www.rockyphotoclub.org.au/>

Facebook page: <https://www.facebook.com/rockyphotoclub>

Email: [info@rockyphotoclub.org.au](mailto:info@rockyphotoclub.org.au)

## PROUDLY SUPPORTED BY

The Rockhampton Agricultural Show is proud to showcase the talent and creativity of photographers through the Photography Competition. These competitions highlight the stunning visual storytelling and the artistic eye of our community.

A special thank you to [Camera House Rockhampton](#) for their generous contributions towards prize money, awards, and the smooth operation of this popular competition.

Your support inspires and celebrates local photographers, both amateur and professional.

The Photography Competitions thrives thanks to the generosity of supporters like Camera House Rockhampton. If you're passionate about photography and would like to contribute, we'd love to hear from you!

Contact us at [show@rrc.qld.gov.au](mailto:show@rrc.qld.gov.au) to learn how you can support the Photography Competitions at the Rockhampton Agricultural Show.

Entrants of 2025 Rockhampton Agricultural Show are invited to the below offer from Camera House:

- 2 FREE prints not exceeding 8" x 12" per entrant, for Open & Public entrants in the 2025 Rockhampton Agricultural Show.
- 4 FREE 7" x 5" prints per High School entrant in the 2025 Rockhampton Agricultural Show.

4 FREE 6" x 4" prints per Primary School entrant in the 2025 Rockhampton Agricultural Show.

The logo for CameraHouse, featuring the word "CameraHouse" in a white sans-serif font with a small red dot above the 'e' in "House", set against a dark grey rectangular background.

## REGULATIONS

Please review carefully, as there may have been updates since the 2024 schedule.

1. **Do not use sticky tape or double-sided tape**, the best adhesive is a strong glue or using self-adhesive coreboard. If using a glue, ensure it is completely dried before packaging prints to avoid damage.
2. Exhibits will not be accepted without payment of entry fees.
3. All entries to be bona fide handiwork of the exhibitor.
4. Maximum of four (4) entries per class per person.
5. Prints with velcro/string/clips or other mounting materials **will not** be accepted, to prevent damage to other prints.
6. Prints in frames or on canvas **will not** be accepted.
7. Watermarks, dates or names are not permitted on prints.
8. Any print entered at any previous Rockhampton Agricultural Show is not permitted to be entered again.
9. Repeat submission of a print into multiple competitions is not permitted.
10. A print will be moved to a more suitable class instead of disqualification where possible.
11. Entries must be printed on photographic quality paper and may be printed either by a commercial photo lab or from home. Prints on standard document printing paper will not be accepted.
12. Complete the exhibitor cards on page 12 and adhere these to **the back** of each print right way up. Any unmarked prints will be disqualified.
13. The title of the print on the exhibitor card **MUST** be the same as on the entry in Showday Online.
14. Any print damaged or otherwise unfit for display will be disqualified at the discretion of the stewards.
15. Any print with title or name on the front of it will be disqualified.
16. Prints do not need to be mounted on card or coreboard, if you choose to, the size of the backing and photo total **must not exceed** the competitions specification (each competition has different sizes, please check before entering a print).
17. If there is insufficient space to display all prints preference will be given to prize-winning entries, then at the discretion of the Competition Stewards.
18. Prints deemed unsuitable for public viewing will not be displayed.
19. The entrant will be notified of any disqualification or change of class for any of their prints.
20. No late entries will be accepted.
21. Failure to adhere to the guidelines will result in disqualification.
22. The Rockhampton Agricultural Show or Rockhampton Photography Club will not be responsible for any accident that may be caused through or by an exhibitor, and it shall be a condition of entry that each exhibitor shall hold Rockhampton Agricultural Show or RPC harmless and indemnified against any legal proceedings arising from any such accident.

### PRINT COLLECTION

23. Any entries not collected on the designated day will be discarded unless other arrangements have been made.
24. Entrants wanting return by post are required to include prepaid postage.

### **PHOTOGRAPHY PRIZES**

25. Prize vouchers (except People's Choice Awards) can be collected from Camera House in the Stockland Shopping Centre after the last day of the Show. Please take your prize cards with you to Camera House Rockhampton.
26. These prize vouchers are not cash – they are vouchers for use when purchasing goods in-store at Rockhampton Camera House and can only be redeemed in-store.
27. Prizes for the People's Choice Awards are gift vouchers provided by the Rockhampton Photography Club and will be mailed to recipients after the Show has concluded.

### **HOW ARE THE CHAMPION PRINTS SELECTED?**

28. The prints awarded first place of each class are judged again to pick a competition champion. The competition champions are all judged a third time to select the grand champion print overall.



## OPEN SECTION

**Entry Fee: \$2 per entry | Voucher: 1st \$20, 2nd \$15, 3rd \$10**

**Entries in this class are limited to a maximum size of 8"x12" including mount/mat.**

The below classes are open to all photographers, including members of any photography or camera club, and professional photographers\*. High School and Primary School age entrants who **are** members of a photography or camera club may also enter photos in the Open Section.

\* A professional photographer is deemed as someone who advertises and sells their services and/or images to derive a living or maintain meaningful supplement income.

Class 4001 Scapes (land, sea, city, sky)

Class 4002 Animals (including wild or zoo animals, birds, farm animals, pets)

Class 4003 Plants (including trees, plants, flowers, either natural or cultivated. Note: fungi are not plants.)

Class 4004 People (colour or mono, one or more people)

Class 4005 Architectural (whole buildings, or parts of buildings)

Class 4006 Macro (small things, for example insects, mushrooms, jewellery, parts of flowers, etc)

Class 4007 Creative (ICM, abstract, spot colour, composite images; should be obviously post-processed)

Class 4008 Any other subject (any photo that doesn't fit into any of the categories 4001 to 4007)

## PUBLIC SECTION

**Entry Fee: \$2 per entry | Voucher: 1st \$20, 2nd \$15, 3rd \$10**

*Entries in this class are limited to a maximum size of 8"x12" including mount/mat.*

The below classes are for people who are NOT members of any photography or camera club and/or who are NOT professional photographers. High School and Primary School age entrants who **are not** members of a photography or camera club may also enter photos into the Public Section.

Class 4009 Scapes (land, sea, city, sky)

Class 4010 Animals (including wild or zoo animals, birds, farm animals, pets)

Class 4011 Plants (including trees, plants, flowers, either natural or cultivated. Note: fungi are not plants.)

Class 4012 People (colour or mono, one or more people)

Class 4013 Architectural (whole buildings, or parts of buildings)

Class 4014 Macro (small things, for example insects, mushrooms, jewellery, parts of flowers, etc)

Class 4015 Any other subject (any photo that doesn't fit into any of the categories 4009 to 4014)

## HIGH SCHOOL SECTION

**Entry Fee: \$1 per entry | Voucher: 1st \$15, 2nd \$10, 3rd \$5**

*Entries in this class are limited to a maximum size of 7"x5" including mount/mat.*

The below classes are for students in High School (or between the ages of 13 and 18 years but have left school) and who are not camera club members

Class 4016 Scapes (land, sea, city, sky)

Class 4017 Animal (including wild or zoo animals, farm animals, pets, insects and spiders)

Class 4018 Plants (including trees, plants, flowers, either natural or cultivated. Note: fungi are not plants.)

Class 4019 People (colour or mono, one or more people)

Class 4020 Phone photography: The photo must be taken and processed entirely with a phone camera.

Class 4021 Any other subject (any photo that doesn't fit into any of the categories 4016 to 4020)

## PRIMARY SCHOOL SECTION

**Entry Fee: \$1 per entry | Voucher: 1st \$15, 2nd \$10, 3rd \$5**

*Entries in this class are limited to a maximum size of 4"x6" including mount/mat.*

The below classes are for students in Primary School and who are not camera club members.

Class 4022 Animals (including wild or zoo animals, farm animals, pets, insects and spiders)

Class 4023 People (colour or mono, one or more people)

Class 4024 Phone photography: The photo must be taken and processed entirely with a phone camera.

Class 4025 Any other subject (any photo that doesn't fit into any of the categories 4022 - 4024)

**GRAND CHAMPION PRINT OVERALL**

**\$70 voucher**

**CHAMPION OPEN PRINT**

**\$40 voucher**

**CHAMPION PUBLIC PRINT**

**\$40 voucher**

**CHAMPION HIGH SCHOOL PRINT**

**\$30 voucher**

**CHAMPION PRIMARY SCHOOL PRINT**

**\$30 voucher**

**PEOPLE'S CHOICE AWARDS**

**Open \$40 Voucher**

**Public \$40 Voucher**

**High School \$30 Voucher**

**Primary School \$30 Voucher**

<p><b>Name:</b></p> <p><b>Title of entry piece:</b></p> <p><b>Class Number:</b></p> <p><b>Phone Number:</b></p>	<p><b>Name:</b></p> <p><b>Title of entry piece:</b></p> <p><b>Class Number:</b></p> <p><b>Phone Number:</b></p>
<p><b>Name:</b></p> <p><b>Title of entry piece:</b></p> <p><b>Class Number:</b></p> <p><b>Phone Number:</b></p>	<p><b>Name:</b></p> <p><b>Title of entry piece:</b></p> <p><b>Class Number:</b></p> <p><b>Phone Number:</b></p>
<p><b>Name:</b></p> <p><b>Title of entry piece:</b></p> <p><b>Class Number:</b></p> <p><b>Phone Number:</b></p>	<p><b>Name:</b></p> <p><b>Title of entry piece:</b></p> <p><b>Class Number:</b></p> <p><b>Phone Number:</b></p>
<p><b>Name:</b></p> <p><b>Title of entry piece:</b></p> <p><b>Class Number:</b></p> <p><b>Phone Number:</b></p>	<p><b>Name:</b></p> <p><b>Title of entry piece:</b></p> <p><b>Class Number:</b></p> <p><b>Phone Number:</b></p>
<p><b>Name:</b></p> <p><b>Title of entry piece:</b></p> <p><b>Class Number:</b></p> <p><b>Phone Number:</b></p>	<p><b>Name:</b></p> <p><b>Title of entry piece:</b></p> <p><b>Class Number:</b></p> <p><b>Phone Number:</b></p>